

Sew Europe – Liverpool – England

88 RICE LANE LIVERPOOL L9 1DD UK

0151 525 0511 0151 525 0184 sew-europe@btconnect.com

PARTS LIST



SINCE 1942

MODEL DA, DAC & MODEL DA-R



REVISION NO. :- A, DOC. CODE :- REVO/DA AND DA-R/01, EFFECTIVE FROM DATE :- 01-09-13



**Heavy Duty Bag Closer
Machines with Oil Pump System**



Identifying and Ordering Parts

The parts list showing all the parts used in the machine is included in this book.

Check the list, and specify parts numbers and quantities required clearly.

Send your order to the nearest agent, distributor or one of our branch offices.

Description of each part and its number is described in this parts list. Screws and nuts for parts are shown adjacent to the relevant parts. When ordering parts, describe clearly the number with its name of part.

Contact us via E-mail, Post or Telephone. Complete contact details are given at the back page of this manual.

GENERAL RECOMMENDATIONS

The machine uses 9-ply thread, wound on 1000 Mtrs. cones. Use correct thread, taking the advice of regional distributors.

Installation of any kind is not necessary. Merely arrange a box, shelf or bracket so that, between bags, operator can conveniently set machine down or hang it up. Do not operate machine from direct current (DC) or 440 volt line unless machine has been specifically ordered for same. Machines are available with 110 & 220Volts electric powered motor.

Machine feeds automatically. Don't pull or hold it back as it feeds across the bag. Do not try to operate machine with bent or blunt needle. Do not disturb main bearing; part No. D605, or looper cam, part No. D310. They are timed and set at factory.

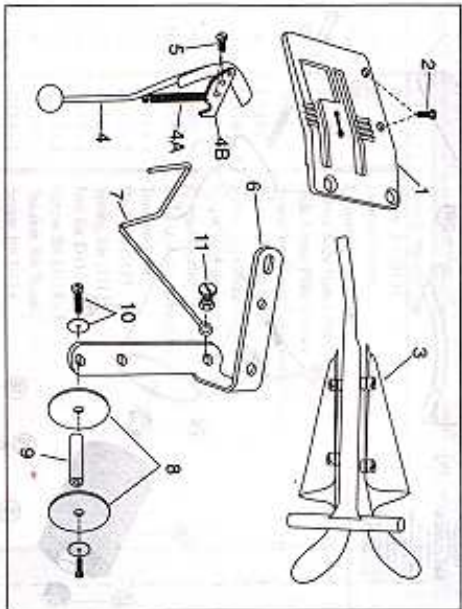
CUSTOMER CARE

Prompt service, supply of spares and guidance are available from our factory and our distributors. Contact us via our website www.sewingnet.com for details on your nearest stockist.

Customer Care : 09915515589

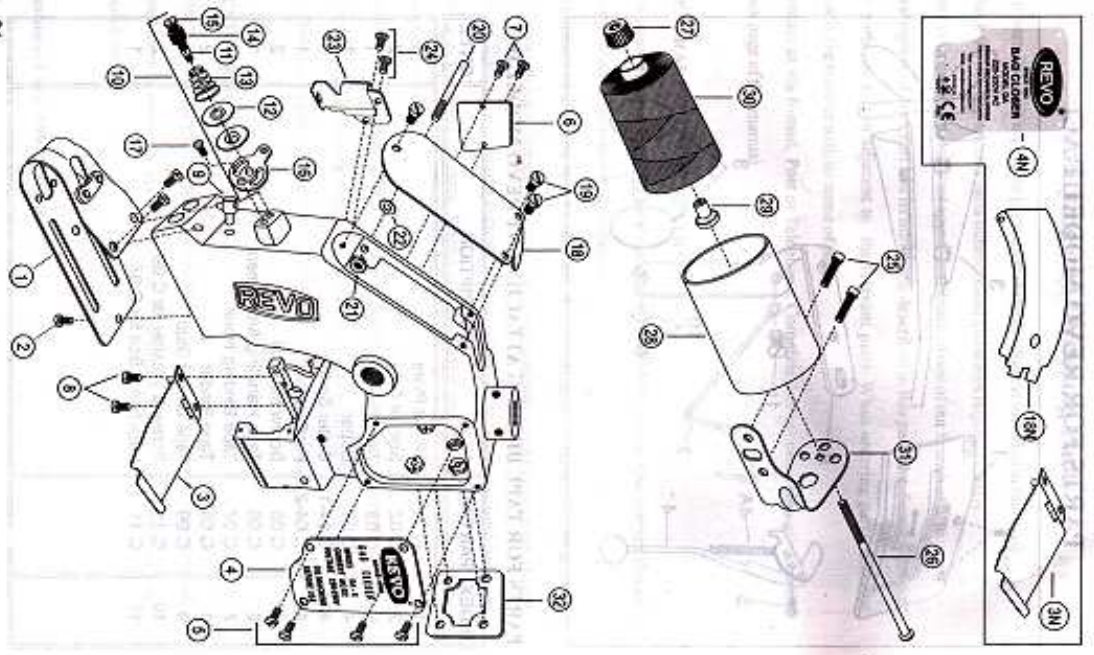
09915515589

PARTS FOR REVO MODEL DAC



PARTS FOR TAPE BINDING ATTACHMENT REVO MODEL DAC

INDEX	PART NO.	DESCRIPTION	QNTY.
1	C 01	Throat Plate	1
2	C 02	Bolt for C 01	2
3	C 03	Tape Fodder	1
4	C 04	Cutter	1
4A	C 04-1	Cutter Spring	1
4B	C 04-2	Fix Cutter	1
5	C 05	Screw for C 04	2
6	C 06	Tape Handling Attachment	1
7	C 07	Tape Binding Hook	1
8	C 08	Tape Binder	2
9	C 09	Tape Binder Stud	1
10	C 10	Screw & Washer for C 09	2
11	C 11	Lock Nut & Bolt for C 07	1



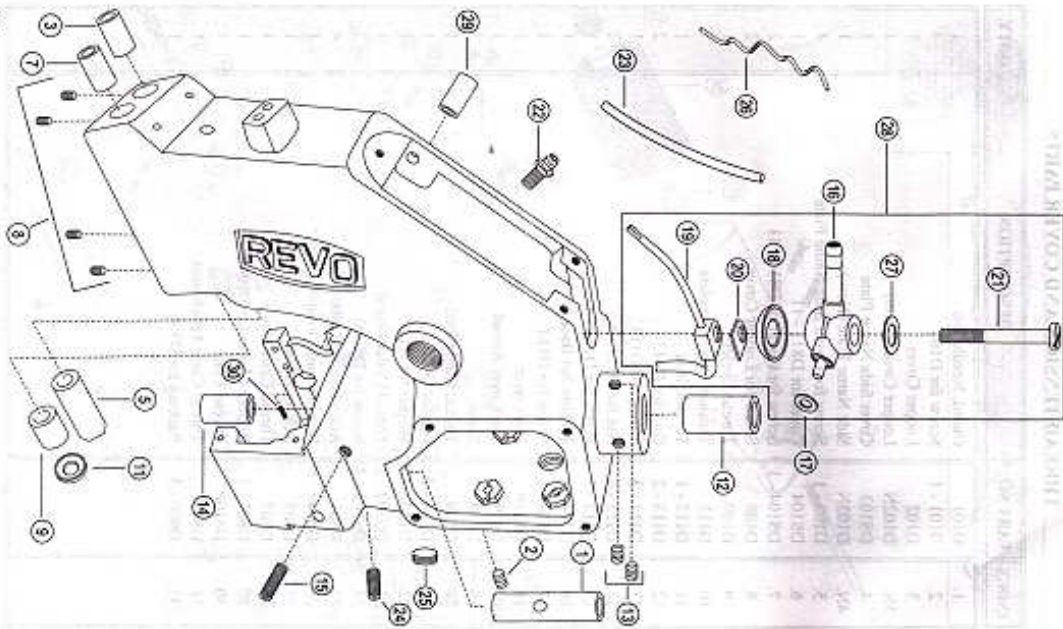
21

THREAD TENSION AND COVER PARTS

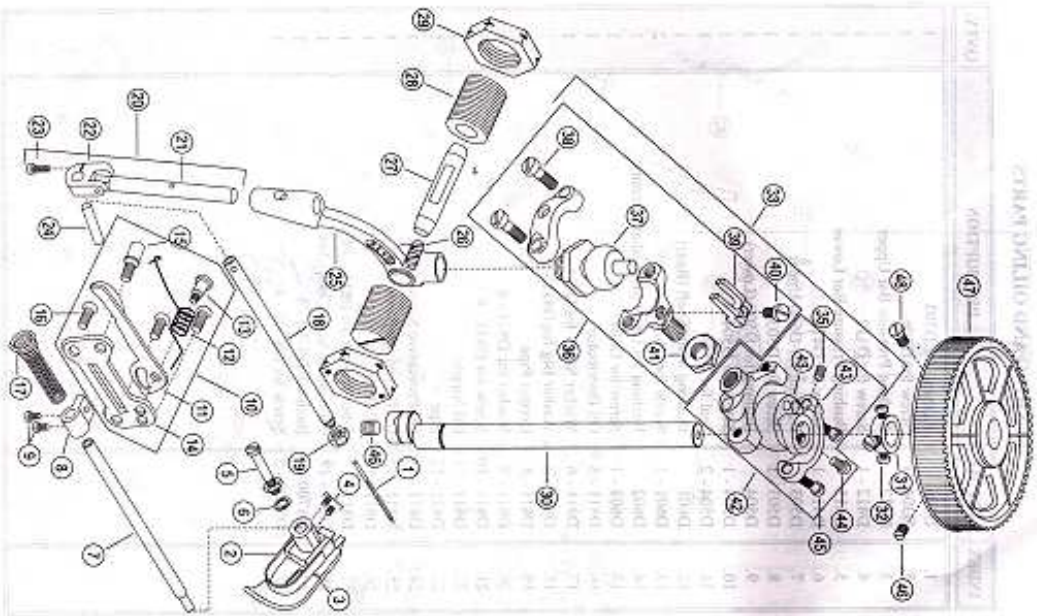
INDEX	PART NO.	DESCRIPTION	QNTY.
1.	D101	Guard, Needle Bar	1
2.	D102	Screw for D101	4
3.	D102N	Looper Cover	1
3N.	DS103	Looper Cover (New)	1
4.	D103N	Cover Side Name Plate	1
4N.	D103N	Slide Name Plate (New)	1
5.	DS104	Screw for Cover Side Name Plate	4
6.	DS104 - 1	Cover for D811 - 11	1
7.	DS104 - 1	Screw for Cover of D811 - 11	2
8.	D108	Screw for Looper Cover	2
9.	D109	Thread Byelock	1
10.	D113	Tension Assy. Complete	1
11.	D113 - 1	Tension Rod	1
12.	D113 - 2	Disk for D113	1
13.	D113 - 3	Spring for D113	2
14.	D113 - 4	Nut for D113 - 1	2
15.	D113 - 5	Screw for D113 - 1	1
16.	D114	Tension Set Base	1
17.	D114 - 1	Screw for D114	1
18.	DS119	Top Cover	1
18N.	D119N	Top Cover Round	1
19.	D119 - 1	Screw	3
20.	D120	Thread Guide Rod	1
21.	D120 - 2	Nut for D120	1
22.	D120 - 3	Washer for D120	1
23.	DS702 - 2	Thread Cutter Guard	1
24.	DS702 - 3	Screw for DS702 - 2	2
25.	D801	Allen Bolt for D800	4
26.	D804	Bolt, Thread Clamping	4
27.	D805	Nut for D804	1
28.	D807	Thread Cone Cup	1
29.	D807 - 1	Rubber Clamp for D804	1
30.	D810P	Thread Cone	1
31.	D815	Thread Core Attachment	1
32.	D906 - 3	Packing for D906	1

22

BUSHING AND OILING PARTS



INDEX	PART NO.	DESCRIPTION	QNTY.
1.	D306	Bushing for D303	1
2.	D306 - 1	Screw for D306	1
3.	D412	Bushing Pressure Bar Upper	1
4.	D412 - 1	Screw for D412	1
5.	D413	Bushing Pressure Bar Lower	1
6.	D413 - 1	Screw for D413	1
7.	D503	Bushing for D500 Upper	1
8.	D503 - 1	Screw for D503	1
9.	D504	Bushing for D500 (Lower)	1
10.	D504 - 1	Screw for D504	1
11.	D504 - 2	Seal for D504	1
12.	D601	Bushing Main Shaft (Rear)	1
13.	D601 - 1	Screw for D601	2
14.	D602	Bushing for D600 Main Shaft (Front)	1
15.	D602 - 1	Screw for D601	1
16.	D811 - 5	Oil Distributor	1
17.	D811 - 6	Washer Small for D811 - 5	1
18.	D811 - 7	Washer Big for D811 - 5	1
19.	D811 - 8	Copper Pipe	1
20.	D811 - 9	Washer for D811 - 8	1
21.	D811 - 10	Screw for D811 - 8	1
22.	D811 - 11	Oil Nipple	1
23.	D811 - 12	Pipe	1
24.	D811 - 14	Oil Preventive Screw Small	1
25.	D811 - 15	Oil Preventive Screw Big	1
26.	D811 - 16	Oil Wick	1
27.	D811 - 17	Fibre Washer for D811 - 10	1
28.	D811 - 18	Oil System Assy. Comp. Set	1
29.	DS700 - 4	Bush for DS700 - 3	1
30.	DS700 - 5	Screw for DS700 - 4	1

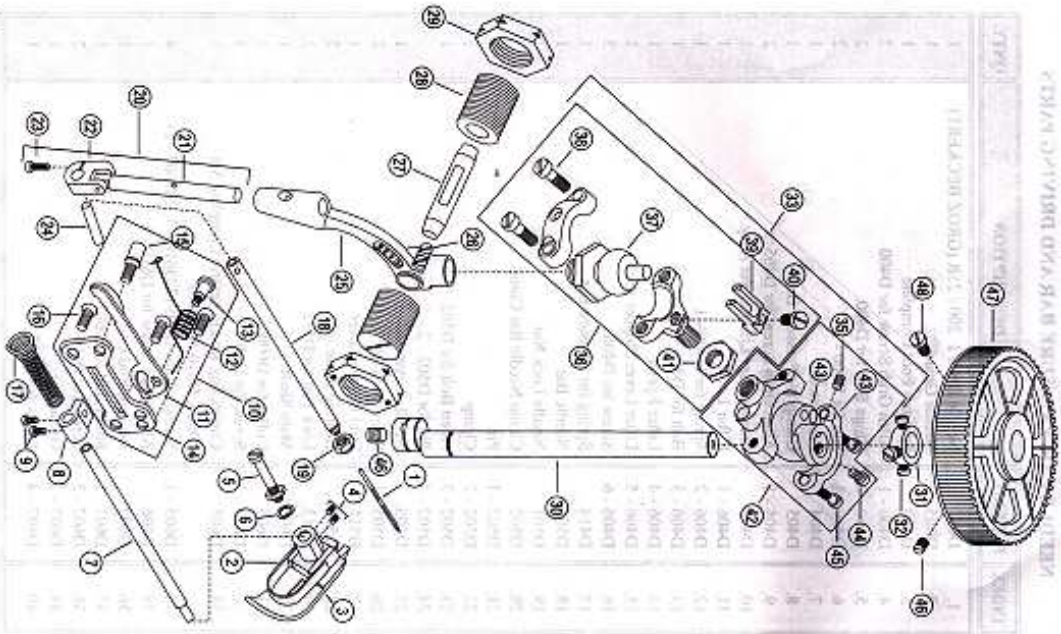


25

NEEDLE BAR, PRESSURE BAR AND DRIVING PARTS

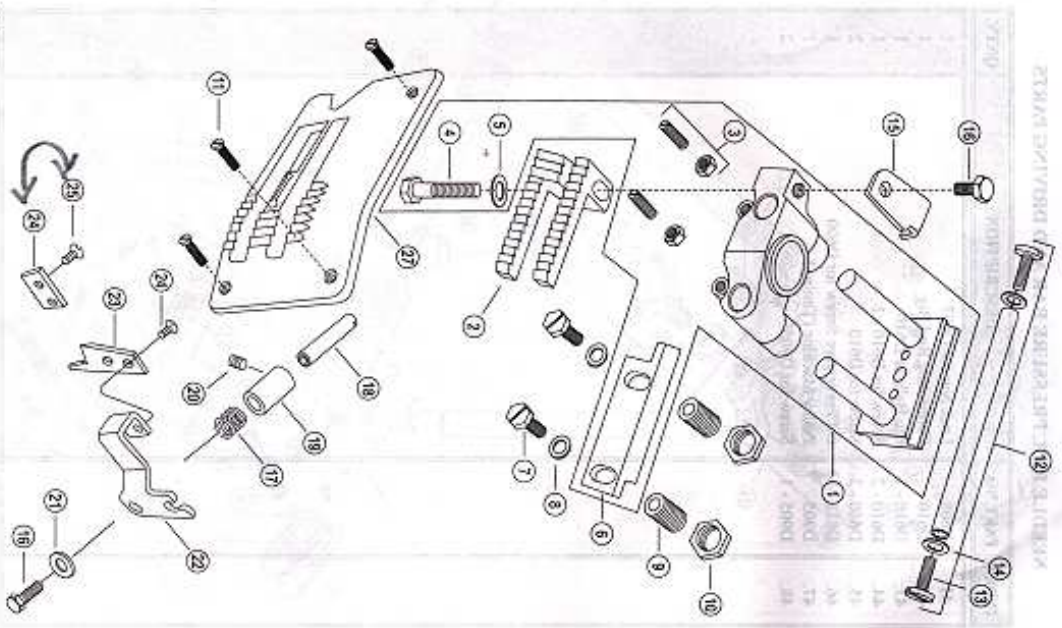
INDEX	PART NO.	DESCRIPTION	QNTY.
1.	D05	Needle DB x 1 200 / 25R (GROZ BECKERT)	1
2.	D505 - 1	Needle Guard	1
3.	D400	Pressure Foot Complete	1
4.	D400 - 1	Allen Grab Screw for D400	2
5.	D400 - 2	Hinge Bolt for D400	2
6.	D400 - 3	Nut for D400 - 2	2
7.	D404	Pressure Bar	1
8.	D405	Clamp for Pressure Bar	1
9.	D405 - 1	Allen Grab Screw for D405	2
10.	D406	Pressure Bar Lifter Lever Assy.	1
11.	D406 - 1	Lifter Lever	1
12.	D406 - 2	Spring for D406 - 1	1
13.	D406 - 3	Bolt for D406 - 1	1
14.	D406 - 4	Lifter Eyelid	1
15.	D406 - 5	Lifter Lever Scooper Stud	1
16.	D406 - 6	Screw for D406	3
17.	D414	Spring for Pressure Bar	1
18.	D500	Needle Bar	1
19.	D501	Needle Lock Nut	1
20.	D502	Clamp Needle Bar Comp.	1
21.	D502 - 1	Pin	1
22.	D502 - 2	Clamp	1
23.	D502 - 3	Allen Bolt for D502	1
24.	D502 - 4	Pin for D502 - 2	1
25.	D505	Needle Lever	1
26.	D505 - 1	Screw for D505	2
27.	D511	Stud Needle Lever	1
28.	D512	Bearing Cone	2
29.	D513	Lock Nut for D512	2
30.	D600	Main Shaft	1
31.	D603	Coller for D600	1
32.	D603 - 1	Screw for D603	3
33.	D605	Connecting Rod Eccentric Complete Set (D607, D610 & D608)	1
34.	D605 - 1	Screw Set for D605 (2 D610 - 3, 2 D607 - 2)	4
35.	D606	Allen Grab Screw for D610 - 1	1
36.	D607	Bearing Rod End	1
37.	D607 - 1	Small Ball for D607	1
38.	D607 - 2	Screw for D607	2
39.	D607 - 3	Guide	1
40.	D607 - 4	Screw for D607 - 3	1

26



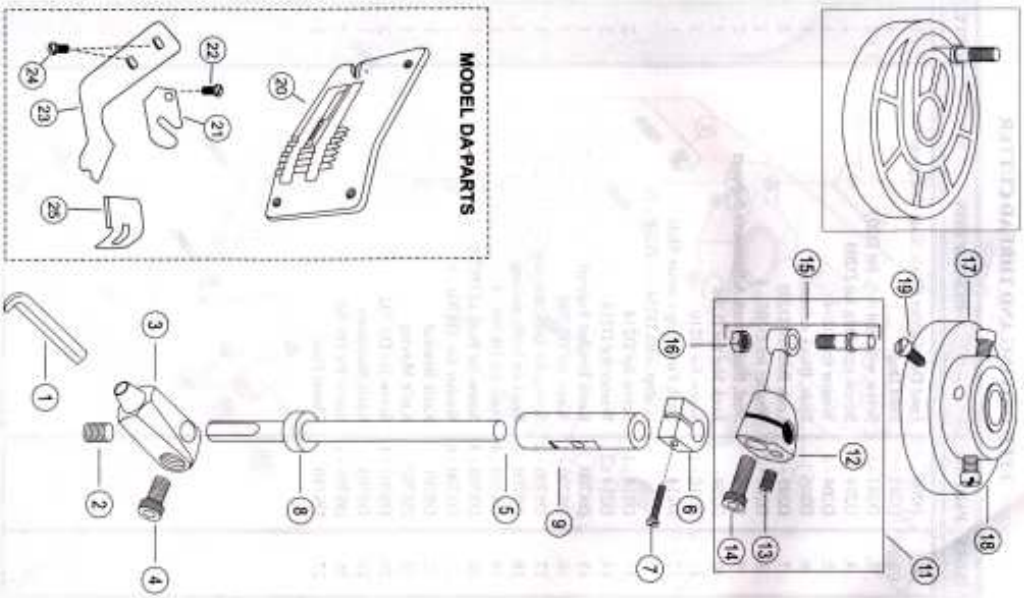
NEEDLE BAR, PRESSURE BAR AND DRIVING PARTS

INDEX	PART NO.	DESCRIPTION	QNTY.
41.	D608	Lock Nut for D607	1
42.	D610	Connecting Rod Big	1
43.	D610 - 1	Big Ball for D610	1
44.	D610 - 2	Screw for D610 - 1	1
45.	D610 - 3	Screw for D610	2
46.	D811 - 13	Oil Preventive Screw for D600	1
47.	D905	Pulley Machine (Timing)	1
48.	D905 - 1	Screw for D905	2



FEED DRIVING AND THREAD CUTTER

INDEX	PART NO.	DESCRIPTION	QNTY.
1.	D200	Feed Dog Carrier Block Slide Complete Set	1
2.	D203	Feed Dog	1
3.	D203 - 1	Screw with Nut Adj. for D203	2 + 2
4.	D204	Screw attaching for D203	1
5.	D204 - 1	Washer for D204	1
6.	D205	Slide, Block Adjusting	1
7.	D205 - 1	Lock Bolt for D205	1
8.	D205 - 2	Washer for D205 - 1	2
9.	D206	Stud, Slide Block Adjustment Support	2
10.	D209	Lock Nut for D206	2
11.	D210 - 1	Screw for D210	3
12.	D214	Stud, Feed Dog Carrier Slide (Comp. with D214 - 1, D214 - 2)	1
13.	D214 - 1	Washer for D214	2
14.	D214 - 2	Washer for D214	2
15.	DS700	Knife Bracket Support	1
16.	DS700 - 1	Screw for DS 700	1
17.	DS700 - 2	Spring for knife moving	2
18.	DS700 - 3	Shaft for knife moving	1
19.	DS700 - 4	Bush for DS700 - 3	1
20.	DS700 - 5	Screw for Bush of DS700 - 3	1
21.	DS700 - 6	Washer for DS700 - 3	1
22.	DS701	Knife Bracket	1
23.	DS702	Knife Moving	1
24.	DS702 - 1	Screw for DS 702	1
25.	DS703	Knife Stationary	2
26.	DS703 - 1	Screw for DS 703	1
27.	DS710	Throat Plate	1

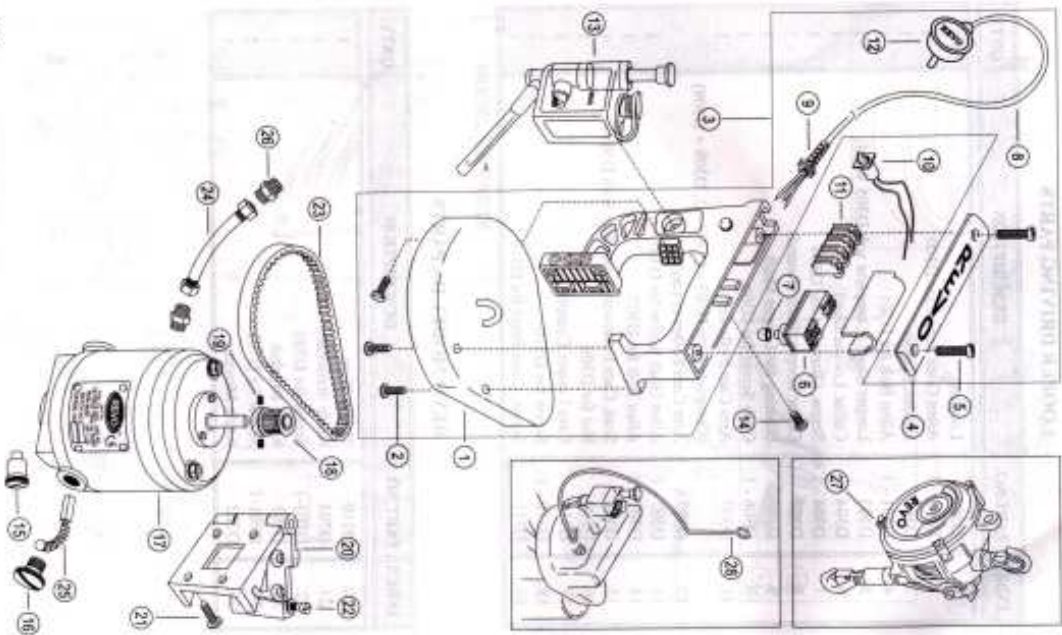


LOOPER DRIVING PARTS

INDEX	PART NO.	DESCRIPTION	QNTY.
1.	D300	Looper	1
2.	D300 - 1	Allen Grab Screw for D300	1
3.	D301	Header, Looper	1
4.	D301 - 1	Allen Bolt for D301	1
5.	D303	Looper Shaft (Complete with D305 Weld)	1
6.	D304	Collar, Looper Shaft	1
7.	D304 - 1	Screw, Clamping for D304	1
8.	D305	Collar (Looper Shaft (Round))	1
9.	D306	Bushing for Looper Shaft	1
10.	D306 - 1	Grab Screw for D306	1
11.	D307	Arm Cam Follower	1
12.	D307A	(Complete with D307 - 1, 307 - 2, D308 + D309)	
13.	D307 - 1	Arm Cam Follower (only)	1
14.	D307 - 2	Allen Grab Screw for D307	1
15.	D308	Stud, Cam Follower (Complete with D309)	1
16.	D309	Nut for D308	1
17.	D310	Cam Looper Complete	1
18.	D310 - 1	Screw for D310	2
19.	D311	Screw, Cone Point for D310	1

REVO MODEL DA PARTS

INDEX	PART NO.	DESCRIPTION	QNTY.
20.	D710	Throat Plate	1
21.	D703	Knife Stationary	1
22.	D703-1	Screw for D703	1
23.	D701	Knife Bracket	1
24.	D701-1	Screw for D701	2
25.	D702	Knife Marking	1



MOTOR PARTS AND HANDLE PARTS

INDEX	PART NO.	DESCRIPTION	QNTY.
1.	D105	Guard Belt	1
2.	D105 - 1	Screw for D105	3
3.	D800	Handle Complete with Guard Belt (105, 802, 802 - 1, 105 - 1)	1
4.	D802	Micro Switch Cover	1
5.	D802 - 1	Screw for D802	2
6.	D806	Micro Switch	1
7.	D806 - 3	Micro Button Guard	1
8.	D808 - 1	Wire 12 Feet Length	1
9.	D808 - 2	Handle Wire Sleeve	1
10.	D808 - 3	Indicator Bulb	1
11.	D808 - 4	Wire Connector Stick	1
12.	D809	Plug	1
13.	D811	Oil Tank	1
14.	D811 - 1	Screw for D811	1
15.	D900 - 3	Carbon Holder with Cap Cont. Type	2
16.	D900 - 4	Carbon Cap Cont. Type	2
17.	D901	Motor Int.	1
18.	D903	Pulley Motor (Timing)	1
19.	D903 - 1	Screw for D903	2
20.	D906	Hinges Motor Mount	1
21.	D906 - 1	Screw for D906	8
22.	D908	Screw Locking for D906	2
23.	D910	Timing Belt (OPTIBELT ZR 170XL)	1
24.	DS913	Flexible Pipe	1
25.	D919	Carbon Brushes with Spring Square Type	2
26.	DS936	Nut for DS913	2

OPTIONAL ACCESSORIES

INDEX	PART NO.	DESCRIPTION	QNTY.
27.	D907	Revs Suspension Unit	1
28.	D907A	Hanging Hook	1
29.	D808	Wire (12 Feet Length)	1
30.	D808C	Wire Roll (90m)	1